

SCOPE OF WORK

Specifications:

Drawings and Technical Notes attached. All work shall be in accordance with Metropolitan Sewer District (MSD) construction specifications for all pay items.

Requirements for each Repair Location:

Item No.	Description
1	Remove and Replace Valve Pit (Canister) A8-SANCAN-003 at 3533 New Town Lake Drive with AIRVAC Valve Pit including all internal parts for operation. Existing depth from surface to bottom of sump is approximately 9.7 feet.*
2	Remove and Replace Valve Pit (Canister) A8-SANCAN-004 at 3525 New Town Lake Drive with AIRVAC Valve Pit including all internal parts for operation. Existing depth from surface to bottom of sump is approximately 10.7 feet. Disconnect existing canister from buffer tank and cap line to buffer tank.*
3	Remove and Replace Valve Pit (Canister) B8-SANCAN-033 at 3416 Millington Drive with AIRVAC Valve Pit including all internal parts for operation. Existing depth from surface to bottom of sump is approximately 9.6 feet.*
4	Remove and Replace Valve Pit (Canister) A8-SANCAN-156 at 3440 Millington Drive with AIRVAC Valve Pit including all internal parts for operation. Existing depth from surface to bottom of sump is approximately 9.5 feet.*
5	Remove and Replace Valve Pit (Canister) A8-SANCAN-067 at 3525 Tarn Street with AIRVAC Valve Pit including all internal parts for operation. Existing depth from surface to bottom of sump is approximately 5.5 feet.*
6	Remove and Replace Valve Pit (Canister) A8-SANCAN-173 at 3408 Hiram Street with AIRVAC Valve Pit including all internal parts for operation. Existing depth from surface to bottom of sump is approximately 10.3 feet.*
7	Remove and Replace Valve Pit (Canister) A8-SANCAN-069 at 3537 Tarn Street with AIRVAC Valve Pit including all internal parts for operation. Existing depth from surface to bottom of sump is approximately 10.3 feet.*
8	Remove and Replace Valve Pit (Canister) A8-SANCAN-070 at 3541 Tarn Street with AIRVAC Valve Pit including all internal parts for operation. Existing depth from surface to bottom of sump is approximately 10.5 feet.*
9	Remove and Replace Valve Pit (Canister) A8-SANCAN-071 at 3549 Tarn Street with AIRVAC Valve Pit including all internal parts for operation. Existing depth from surface to bottom of sump is approximately 10.3 feet.*
10	Remove and Replace Valve Pit (Canister) A8-SANCAN-106 at 3440 Mackey Wherry Street with AIRVAC Valve Pit including all internal parts for operation. Existing depth from surface to bottom of sump is approximately 10.5 feet.*
11	Remove and Replace Valve Pit (Canister) B8-SANCAN-019 at 3413 Newtown Lake Drive with AIRVAC Valve Pit including all internal parts for operation. Existing depth from surface to bottom of sump is approximately 10.1 feet.*
12	Remove and Replace Valve Pit (Canister) A7-SANCAN-012 behind 3323 N. Canal Way with AIRVAC Valve Pit including all internal parts for operation. Existing depth from surface to bottom of sump is approximately 9.8 feet.*
13	Remove and Replace Valve Pit (Canister) A7-SANCAN-014 behind 3303 N. Canal Way with AIRVAC Valve Pit including all internal parts for operation. Existing depth from surface to bottom of sump is approximately 8.8 feet.*
14	Remove and Replace Valve Pit (Canister) A7-SANCAN-019 at 3308 Canal Street with AIRVAC Valve Pit including all internal parts for operation. Existing depth from surface to bottom of sump is approximately 10.3 feet.*

15	Remove and Replace Valve Pit (Canister) A7-SANCAN-018 at 3316 Canal Street with AIRVAC Valve Pit including all internal parts for operation. Existing depth from surface to bottom of sump is approximately 9.4 feet. *
16	Remove and Replace Valve Pit (Canister) A7-SANCAN-017 at 3328 Canal Street with AIRVAC Valve Pit including all internal parts for operation. Existing depth from surface to bottom of sump is approximately 10.5 feet.*
17	Remove and Replace Valve Pit (Canister) A7-SANCAN-010 behind 3343 N. Canal Way with AIRVAC Valve Pit including all internal parts for operation. Existing depth from surface to bottom of sump is approximately 9.6 feet.
18	Remove and Replace Valve Pit (Canister) A7-SANCAN-011 behind 3331 N. Canal Way with AIRVAC Valve Pit including all internal parts for operation. Existing depth from surface to bottom of sump is approximately 10.1 feet.

* Typical Valve Pit (Canister) includes the following New Town Package components:

- VALVE/BREATHER "F",X' PIT PK
- "F" 2 PIECE PIT PKG, X'
- 3"VALVE PIT FLEX HOSE
- 3" GATE VLV, SLIPxSPIG
- (2) GROMMET, 6" WITH .55 GAP
- 3/4" PVC PIT DRAIN W/CHK VLV
- (2) GROMMET, 4" WITH .55 GAP
- DUPLINE JUNCTION BOX

Bidder's Responsibilities:

1. Existing depths to be field verified by the Bidder. Bidder shall notify City of any discrepancies prior to the purchase of components.
2. It is the responsibility of the bidder to provide warranty information with bid submittal.

Tarn Street

A8-SANCAN-067, 3525 Tarn Street

A8-SANCAN-069, 3537 Tarn Street

A8-SANCAN-070, 3541 Tarn Street

A8-SANCAN-071, 3549 Tarn Street

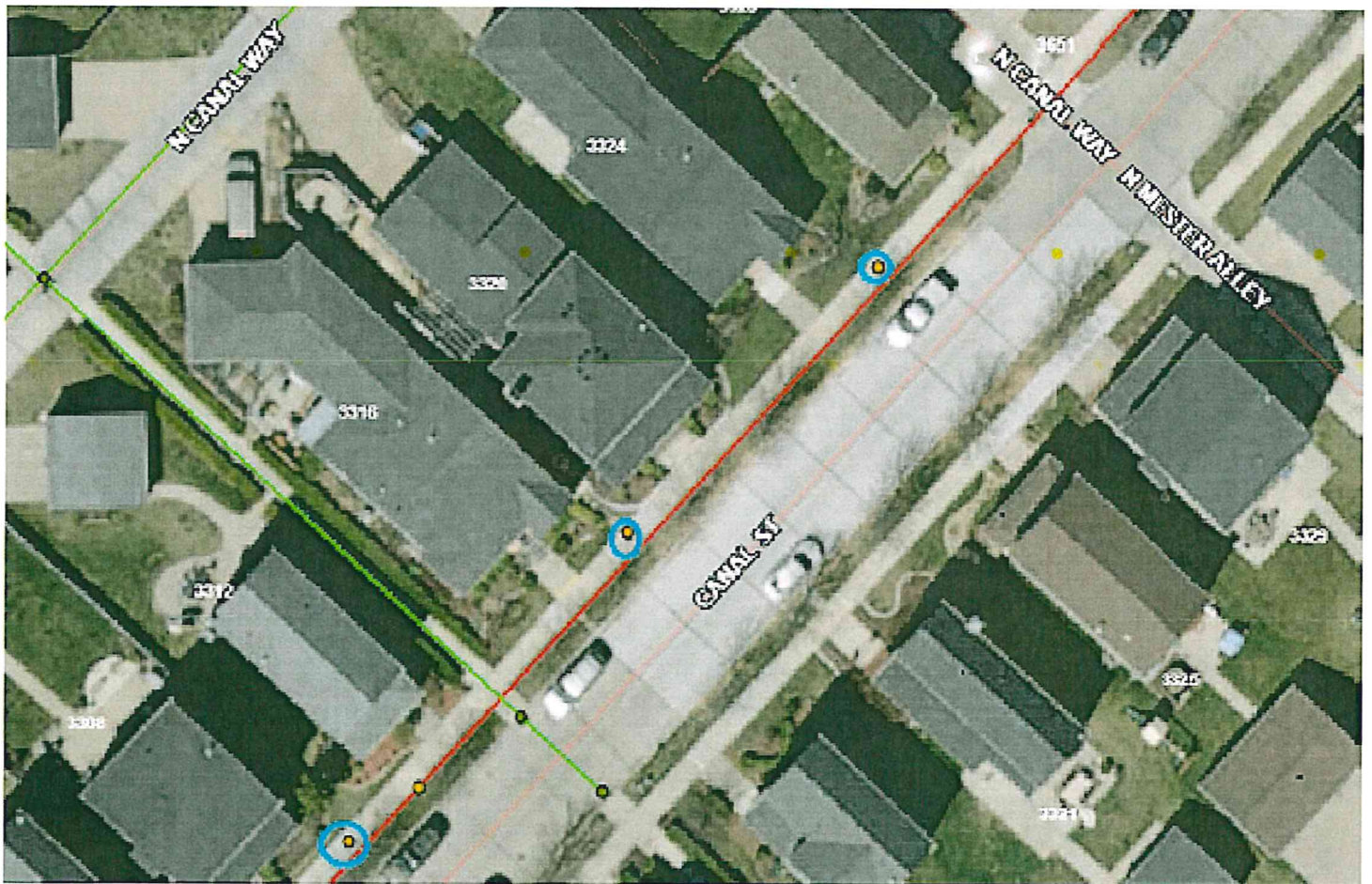


Canal Street

A7-SANCAN-019, 3308 Canal Street

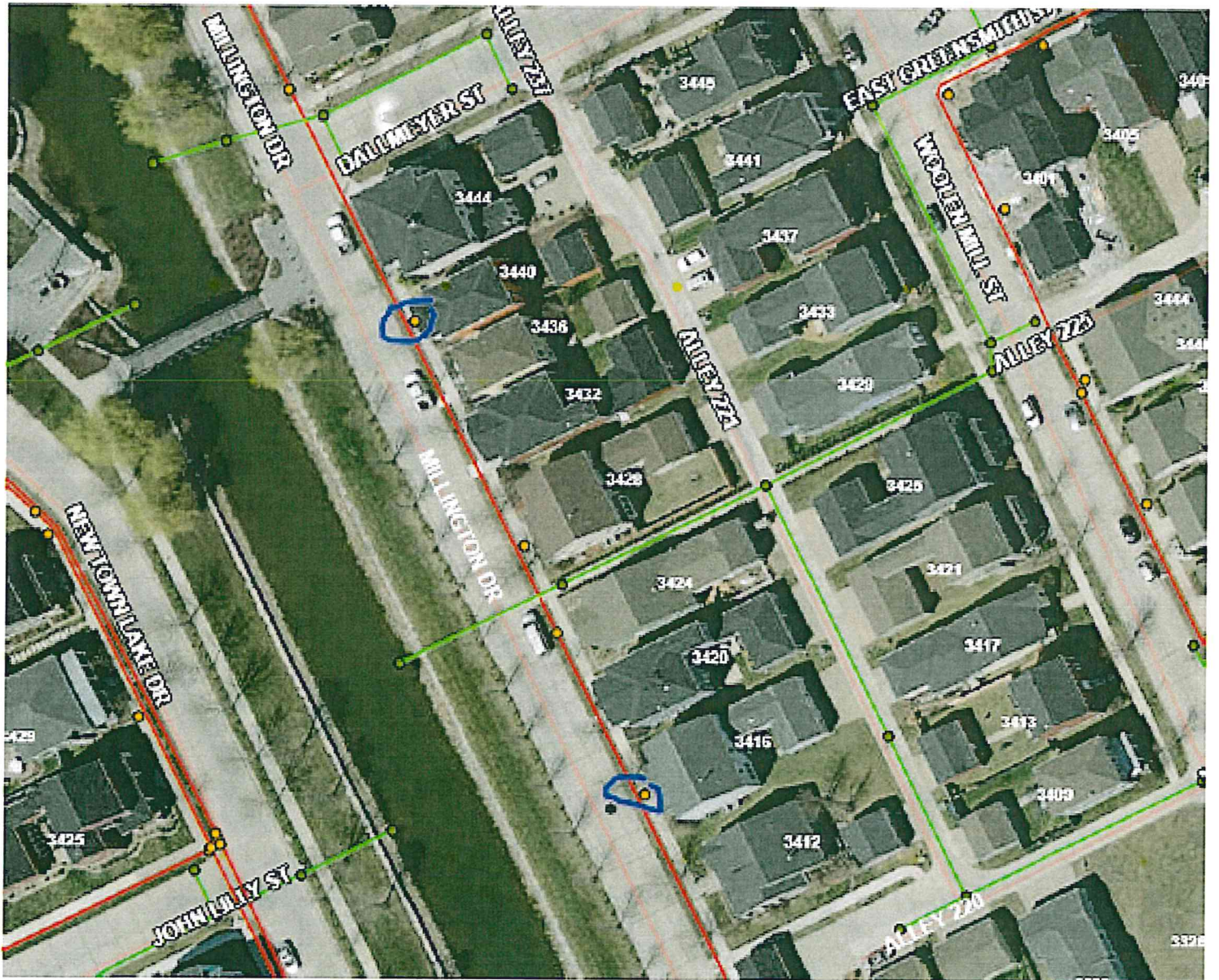
A7-SANCAN-018, 3316 Canal Street

A7-SANCAN-017, 3328 Canal Street



Millington Drive
B8-SANCAN-033, 3416 Millington Drive

A8-SANCAN-156, 3440 Millington Drive



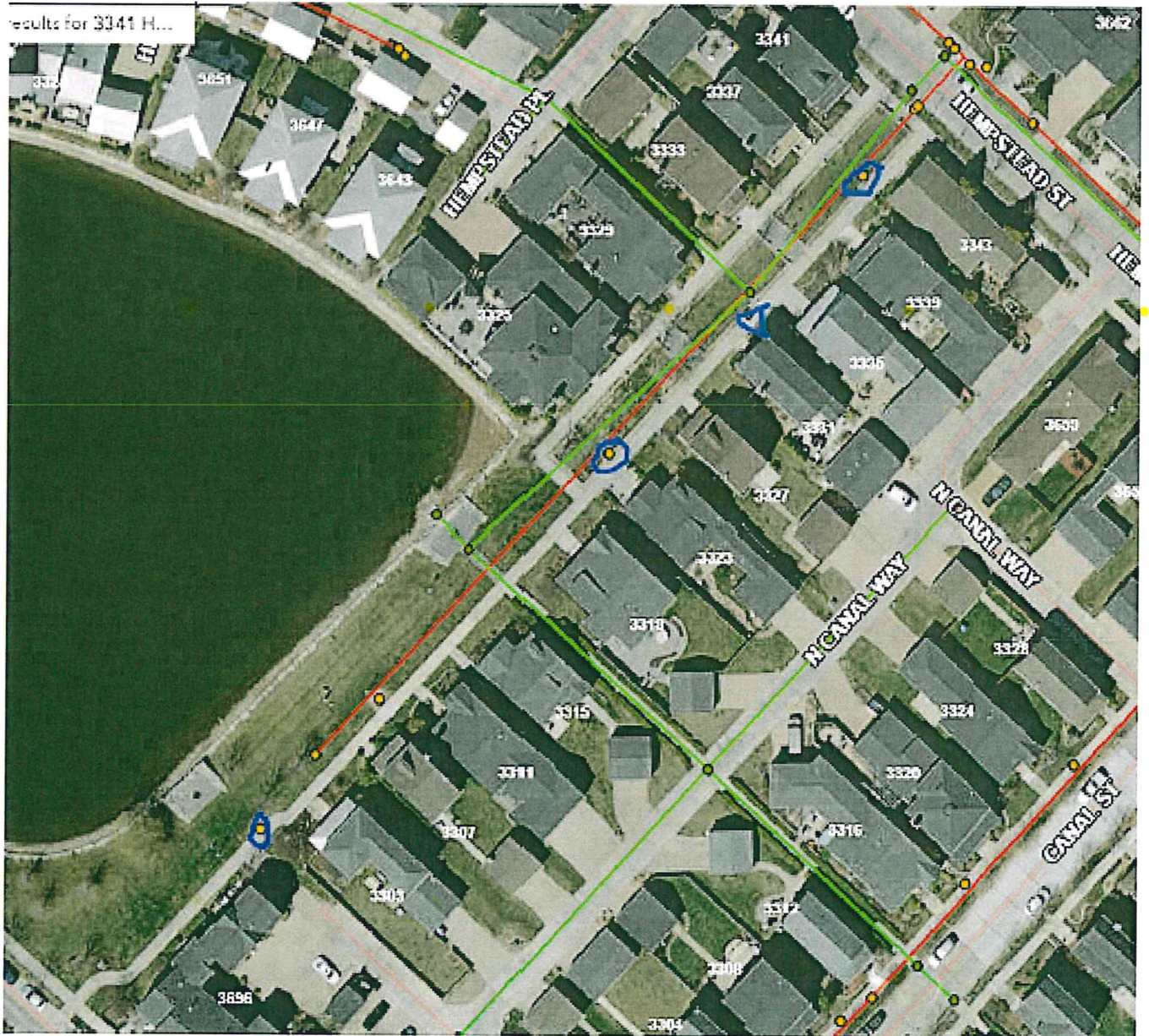
West of North Canal Way

A7-SANCAN-010, behind 3343 N. Canal Way

A7-SANCAN-011, behind 3331 N. Canal Way

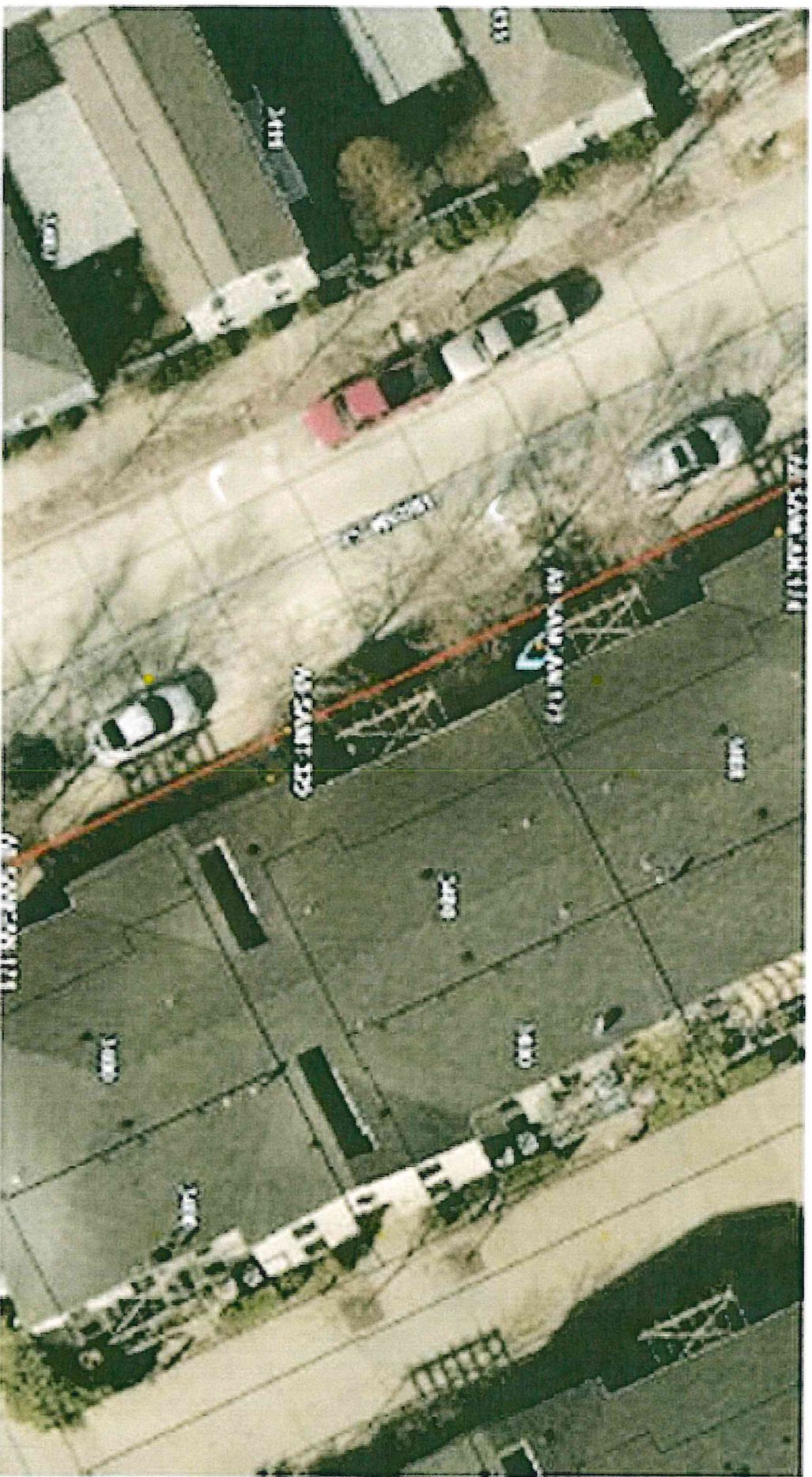
A7-SANCAN-012, behind 3323 N. Canal Way

A7-SANCAN-014, behind 3303 N. Canal Way



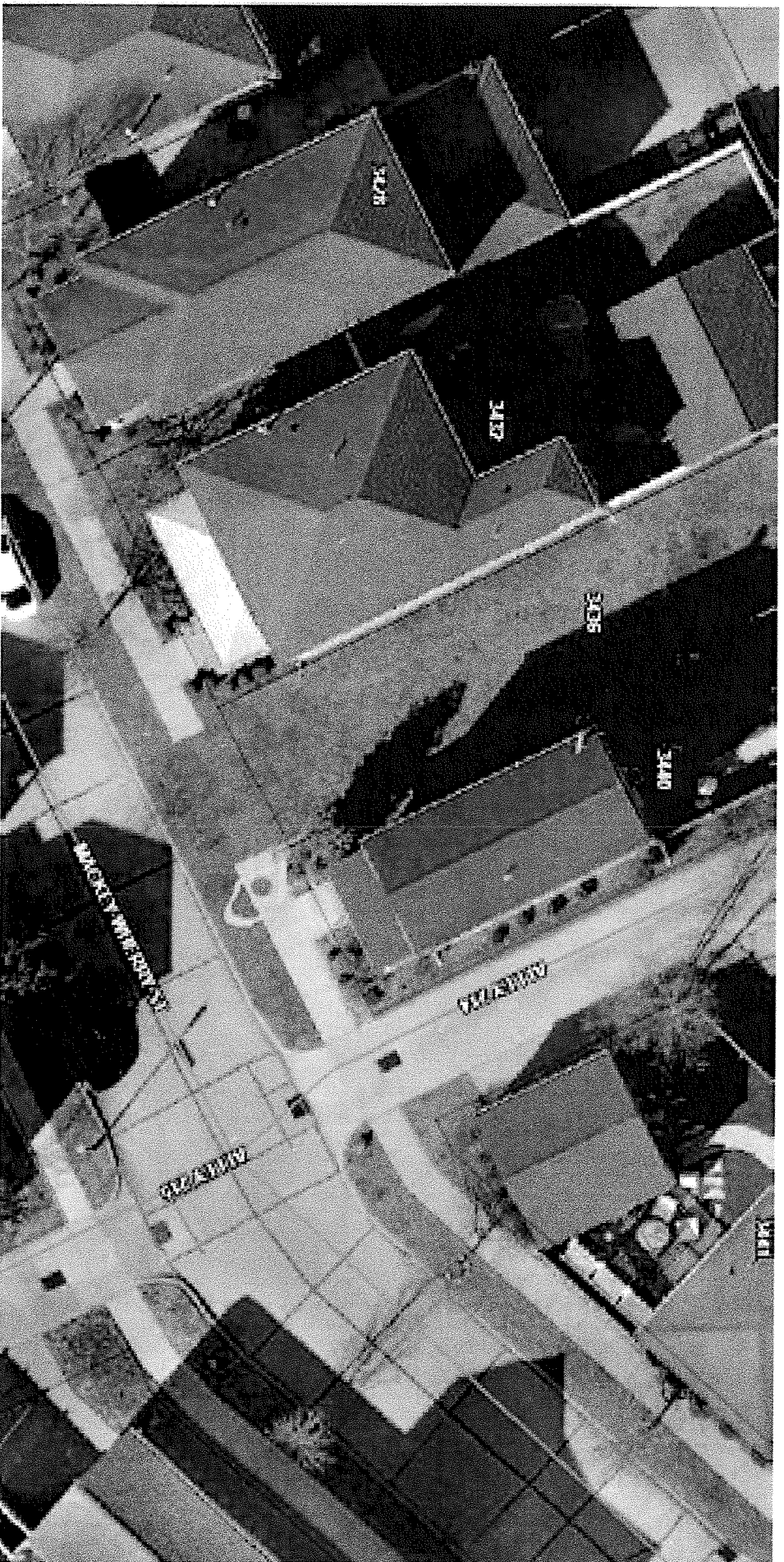
Hiram Street

A8-SANCCAN-173, 3408 Hiram Street



Mackey Wherry Street

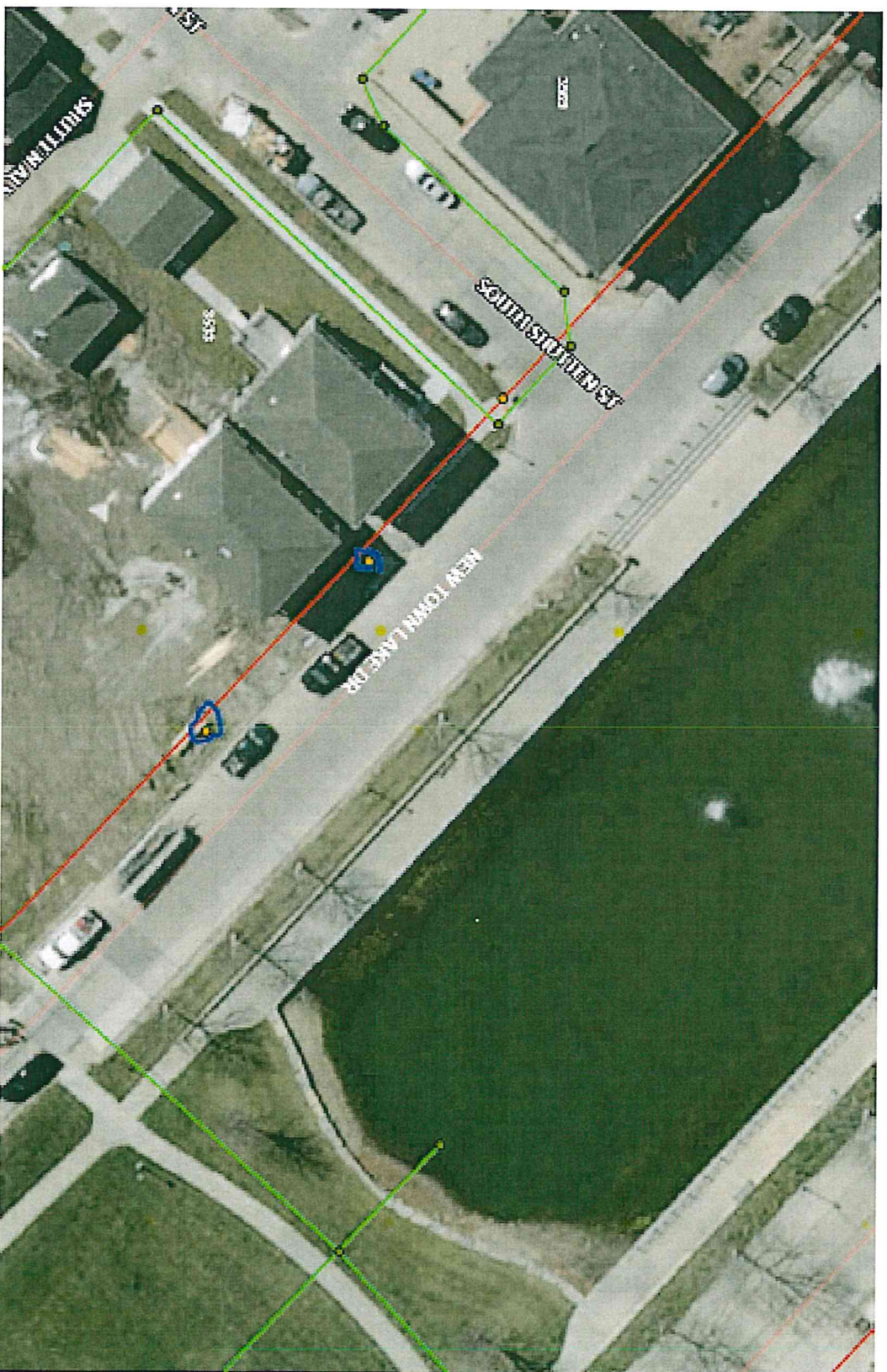
A8-SANCCAN-106 3440 Mackey Wherry Street



New Town Lake Drive

A8-SANNCAN-003, 3533 New Town Lake Drive

A8-SANNCAN-004, 3525 New Town Lake Drive



New Town Lake Drive (continued)

B8-SANNCAN-019, 3413 New Town Lake Drive

